

The SATAminijet 4400 B – User friendly features



Sturdy air cap made of chrome-plated brass. **QC™** air cap thread for quick exchange with only 1 1/4 turns.

Fluid tip and paint needle are made of corrosion-resistant stainless steel

Fluid tip sealing requiring minimal cleaning effort and safe color changes

Reinforced air piston rod

Low-maintenance, self-adjusting air piston and paint needle seals. Paint needle can easily be fitted and removed

Trigger with paint needle protection for an extended lifetime of the paint needle packing

Easy to clean, corrosion-resistant pearloidized™ surface

Ergonomically shaped handle



Large QCC connection allows the use of all cup sizes – no adapter required – and allows easy cleaning of the material passage

Suspension hook for convenient storage

Adjustment elements can easily be operated when wearing gloves:

Handy material flow control with quick thread



Air micrometer for high-precision adjustment of the atomization air. Digital pressure display when using SATA adam 2 (optional)

Easy operation of round/flat spray control: Switching between round and flat fan with a 3/4 turn allows fine adjustment



For the convenient identification of your spray gun. Color code can be exchanged without using a tool

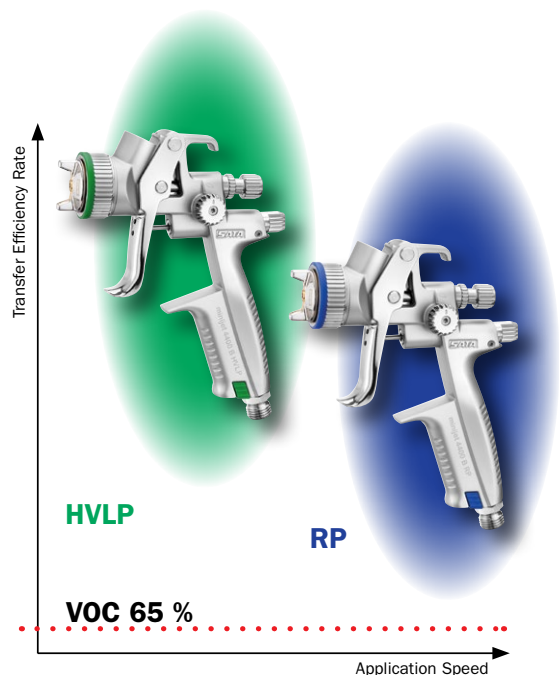


Two ways to reach a perfect result: HVL and RP®

HVL: Due to the low pressure technology, SATAminijet 4400 HVL and HVL SR spray guns achieve especially high transfer rates.

RP: The optimized high pressure technology now also allows maximum work speed with the SATAminijet 4400 RP and RP SR.

Both versions meet highest requirements for mirror finishes, while far exceeding 65% transfer efficiency rates in accordance with VOC legislation.



Perfect Finishes – SATAminijet 4400 B

| | Standard nozzle sets | | | | | SR nozzle sets | | | | |
|---|----------------------|------------|------------|------------|------------|----------------|---------------|---------------|---------------|---------------|
| Nozzle size HVLP/HVLP SR | 0,3 | 0,5 | 0,8 | 1.0 | 1.1 | 0.8 SR | 1.0 SR | 1.2 SR | - | 1.4 SR |
| Nozzle size RP/RP SR | - | 0,5 | - | 1.4 | 1.6 | 0.8 SR | 1.0 SR | 1.2 SR | 1.3 SR | - |
| Spray gun with 0.3 l RPS cup Standard (2x, 0.3 l cup) | 204164 | 204172 | 204180 | 204198 | 204206 | 198168 | 198176 | 198184 | - | 198192 |
| | - | 202382 | - | 198374 | 204156 | 202390 | 198358 | 198366 | 1065136 | - |
| Nozzle set | 201194 | 201202 | 201210 | 201228 | 201236 | 201244 | 201251 | 201269 | - | 201277 |
| | - | 202408 | - | 201319 | 201327 | 201285 | 201293 | 201301 | 1065037 | - |

Check for RP approvals at www.satausa.com

HVLP / HVLP SR: air consumption: 4.2 cfm @ 29 psi
RP / RP SR: air consumption: 7 cfm @ 35 psi

Accessories:

Reusable cups

sold separately

0.15 L QCC reusable alum. cup, cpl. **Part No. 198911**

0.75 L QCC reusable alum. cup, cpl. **Part No. 137729**

1.0 L QCC reusable alum. cup, cpl. **Part No. 96685**

0.125 L QCC reusable PVC cup, cpl. **Part No. 197541**



www.satausa.com/SATAminijet4400

Glass cup kit

for easy paint supply as well as quick color changes.

25 ml glass cup (5x) with ...

... closing lid

Part No. 58164

... plug-in lid

Part No. 53033

Plug-in cup connection
with QCC

Part No. 200220



SATA design set with SATAminijet 4400 B HVLP 1.0

and useful accessories for design painting beginners:

- 125 ml QCC cup
- Plug-in cup adapter, QCC
- 2 plug-on glass pots 25 ml and 3 glass pots with blank lid
- 2 m air hose
- Cleaning and sealing kit
- Tool kit

Part No. 198382

(specify nozzle size, or a 1.0 will be shipped)



SATA®RPS™

Multipurpose cup system for shops focusing on perfect finishes and high profitability. Increases productivity and drastically reduces consumption of cleaning solutions. Sizes: 0.3 l, 0.6 l and 0.9 l



SATA® adam® 2 mini

Compressed air micrometer with electronic pressure measurement.

Part No. 160887 chrome

Part No. 1031674 black



Further useful accessories like air hoses, breathing protection equipment, compressed air filters etc. are available from your SATA dealer.

Your SATA dealer

SATA

SATA USA Inc.

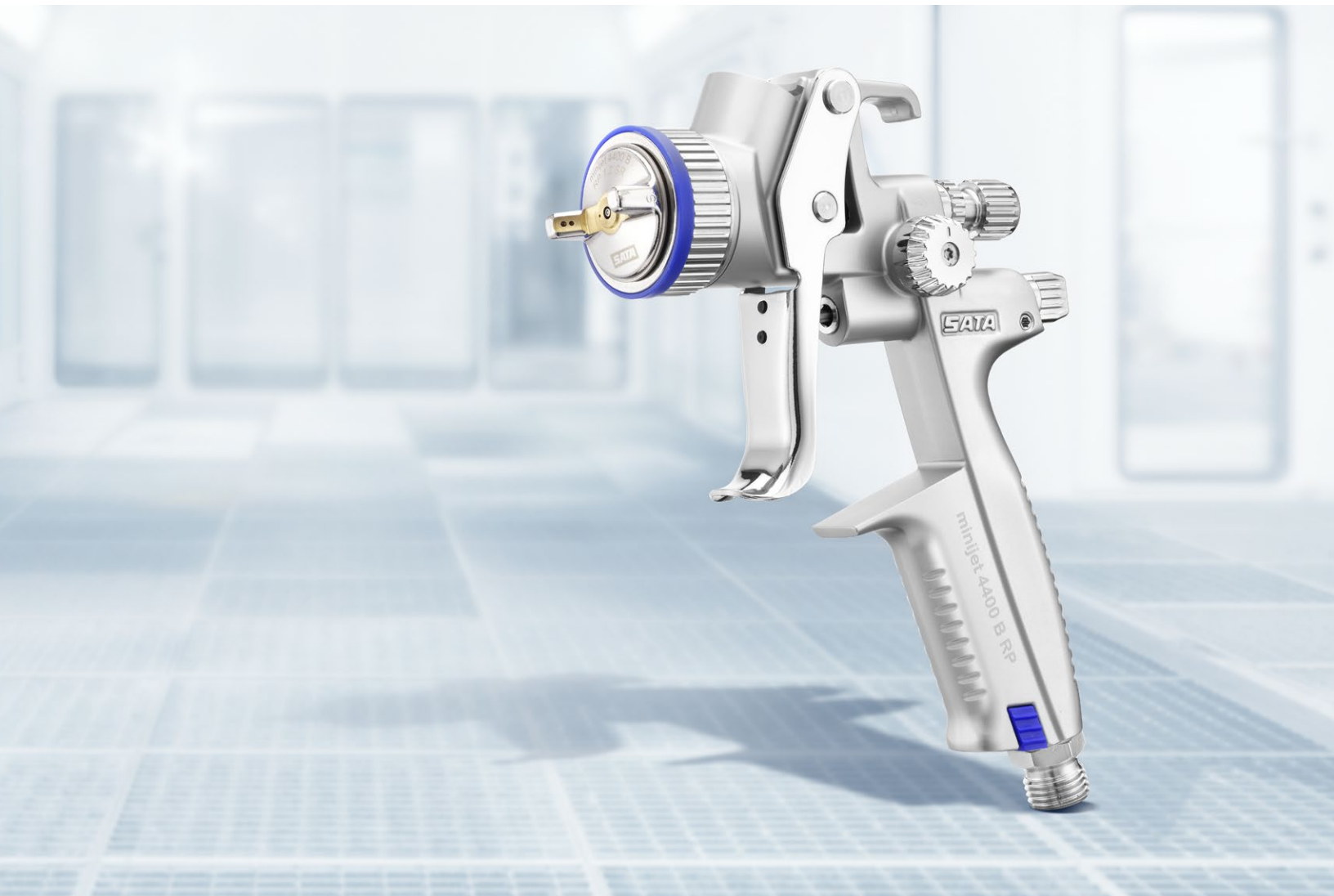
One Sata Drive · PO Box 46
Spring Valley, MN 55975
Phone: 800-533-8016
E-mail: satajet@satausa.com
www.satausa.com



German Engineering

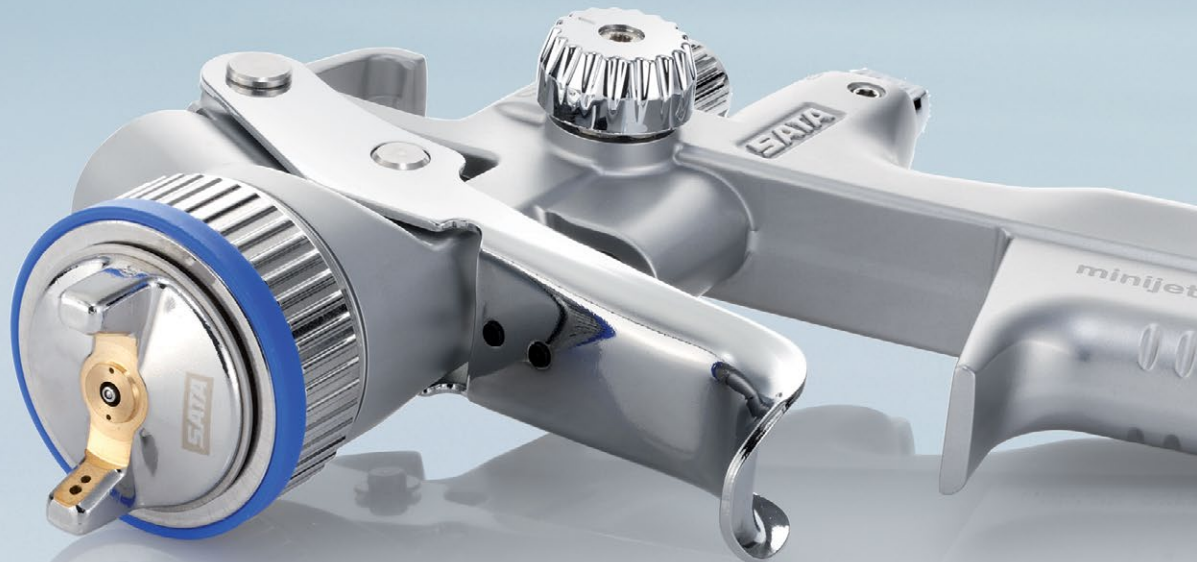
SATAmijet® 4400 B

Compact. Low maintenance. Easy to clean.



SATAmijet 4400 B - Brilliance in Miniature

The SATAmijet 4400 B is the perfect compact spray gun if you are looking for superb finishes on areas of difficult access. The special SR nozzles are perfectly suitable for spot repairs on vehicles. It goes without saying that this spray gun allows the application of all modern paint systems – including waterborne paints.



Ergonomics

With its ergonomically shaped handle, the spray gun is perfectly balanced. All adjustment elements can be safely operated even when wearing gloves. Furthermore, the design of the round/flat spray control is geared to the SATAmijet 3000 B.

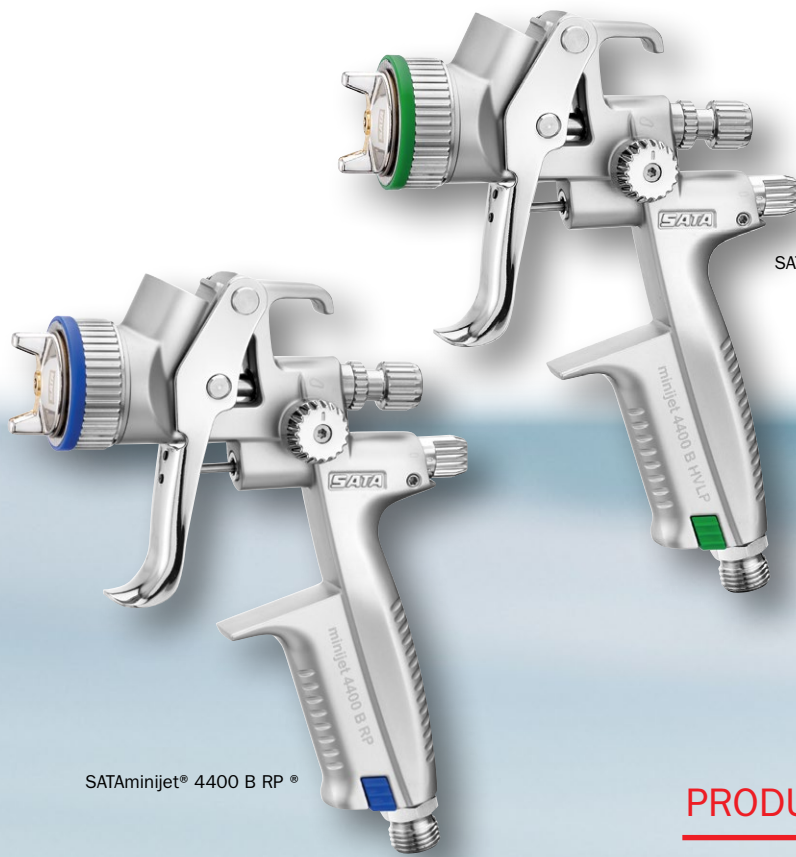
The SATAmijet 4400 B is sturdy and long-lasting; the spray fan can be adjusted with a 3/4 turn only.

Enhanced durability

The spray gun body has a satin gloss pearlodized™ surface which is corrosion-resistant and easy to clean. The sturdy air cap is made of chrome-plated brass; paint needle and fluid tip are made of tempered stainless steel. The trigger protects the paint needle from overspray during painting, thus prolonging the lifetime of the paint needle sealing. The air piston rod has been especially reinforced. All these features increase the service life of the spray gun.

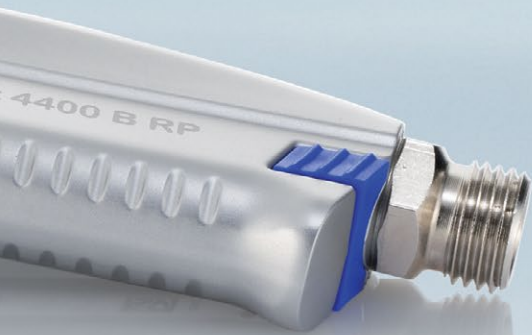
Large QCC cup connection

The SATAmijet 4400 B allows the use of all three RPS cup sizes with no adapter necessary. Furthermore, the large connection makes the cleaning of the material passages extremely safe and easy.



SATAMinijet® 4400 B RP ®

SATAMinijet® 4400 B HVLP



PRODUCT BENEFITS

- For small surfaces and areas of difficult access
- HVLP and RP nozzle sets
- Special SR nozzle sets for the smallest spot repairs (Spot repair)
- Ergonomically shaped handle
- Easy cleaning and maintenance
- Large cup connection QCC for all RPS cup sizes
- Highly flexible in terms of atomization pressure and spray distance

The SATAMinijet 4400 B is perfectly suitable for application on smaller surfaces – in automotive, craft and industry

SATAMinijet 4400 B – all RPS multipurpose cups fit on the QCC cup connection – no adapter is required



For more options in the application of UV

Excellent choice for spraying UV primer

SATAmijet 4400 RP 1.0 SR
with standard RPS cups
Order No. 198358

SATAmijet 4400 RP 1.2 SR
with standard RPS cups
Order No. 198366

SATA RPS 0.6 I UV, 60 cups, lids
flat sieves 125 µ: Order No. 1010496
plug-in sieves 200 µ: Order No. 1010503



SATA 4400 SR Nozzle Selection Guide Automotive, Industrial, Marine & Aerospace

| | HVLP | RP |
|-----------------------|--------------------|--------------------|
| Filler Primer | 1.2SR/1.4SR | 1.2SR/1.3SR |
| Primer Sealer | 1.2SR | 1.2SR/1.3SR |
| Solventborne Basecoat | 1.2SR/1.4SR | 1.2SR/1.3SR |
| Waterborne Basecoat | 1.0SR/1.2SR* | 1.0SR/1.2SR*/1.3SR |
| Clearcoat | 1.0SE/1.2SR*/1.4SR | 1.2SR/1.3SR* |
| Single Stage | 1.2SR/1.4SR | 1.2SR/1.3SR |

The SR nozzle sets are ideal for a technician seeking the performance of a full size spray gun in a smaller package.

*These nozzle sets are most popular in specified category of coating.
Important: Please observe the technical data sheets of the paint manufacturer

HVLP and RP nozzle sets

With its standard HVLP and RP nozzle sets, the SATAmijet 4400 B can be used in industry, craft and design when it comes to application on smaller surfaces or areas of difficult access.

SR nozzle sets for spot repair

The SR nozzle sets (available in HVLP or RP) are classified as a "spot repair" pattern shape and are ideal for spot repairs. Compared to the standard nozzle sets, they feature a wide spray fan with wide-stretched core area; color deviations, and so-called "cloudiness" can be easily avoided.

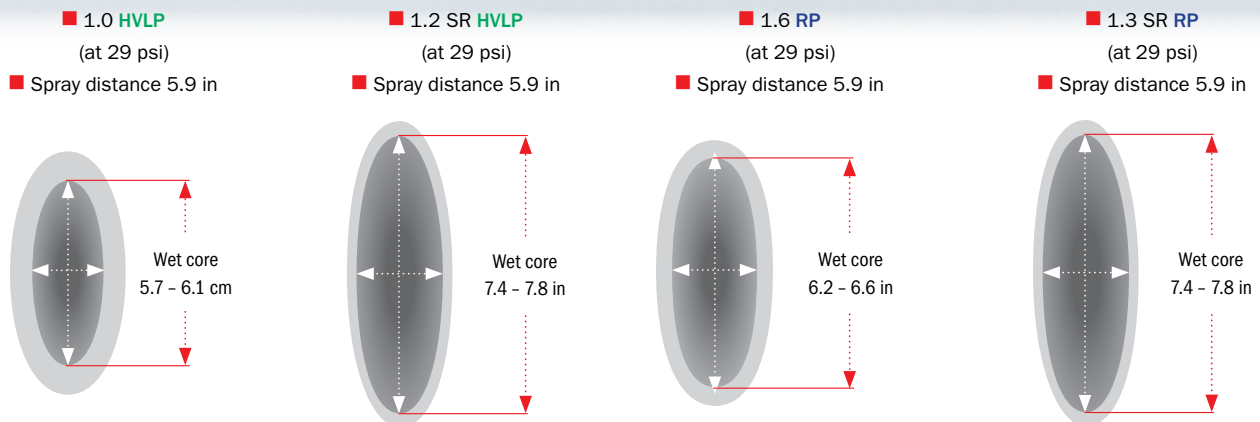
Fan Pattern Comparison*:

SATAmijet 4400 B HVLP
Standard nozzle / SR nozzle

SATAmijet 4400 B RP
Standard nozzle / SR nozzle

SR nozzle especially for Spot Repair applications

- Lower risk of creating bright edges
- Allows application of very thin layers of paint



Standard nozzles with wet, compact core. **SR nozzles** with wide-stretched core.

*Diagram: Approximate data, may vary according to material and viscosity